

ownCloud: Cloud ou plateforme de stockage et partage ?

Your Data, Your Cloud, Your Way!

Stéphane Di Cesare

Sales Engineer

sdc@owncloud.com



Sync & Share Expectations

- Teamwork** – work in small groups, often with external employees
- Efficiency** – The environment must be simple and fast
- Ease of use** – no active data management necessary
- Universal access** – data available on all devices.



Consumer-grade File Sync & Share



- ✔ Simple, self-service set-up and use
- ✔ Data is stored in the cloud
- ✔ Free (initially)

Key Issue 1: Server

- Often no dedicated datacenter
- Server and capacity offer rented
- Location of the server is unknown
- Often, even the provider cannot tell the location



Key Issue 2: Network

- The provider doesn't have a dedicated backbone
- All capacity is rented externally
- The networks are not transparent, even for the provider



Key Issue 3: Storage

- Deduplication is important for the provider to save space and cut costs
- All data is indexed by the provider – even on the client
- Existing data are not uploaded twice
- The provider can have access to all client data



Key Issue 4: Security

- No control on storage policies, access and life cycle.
- No audit possibility
- No integration to existing security infrastructures (Active Directory)
- No way to check source code
- Dependance on the service provider



Key Issue 5: Legal

- US law nearly always applies, independently of the actual storage location
- Liable to scrutiny: FISA, PRISM, TEMPORA, Patriot Act, DCMA etc.
- Secret service might help their local industry



Enterprise-grade File Sync and Share

Consumer-grade usability



Enterprise-grade security,
governance and extensibility



Storage-agnostic flexibility



Enterprise-grade scaling,
availability and admin

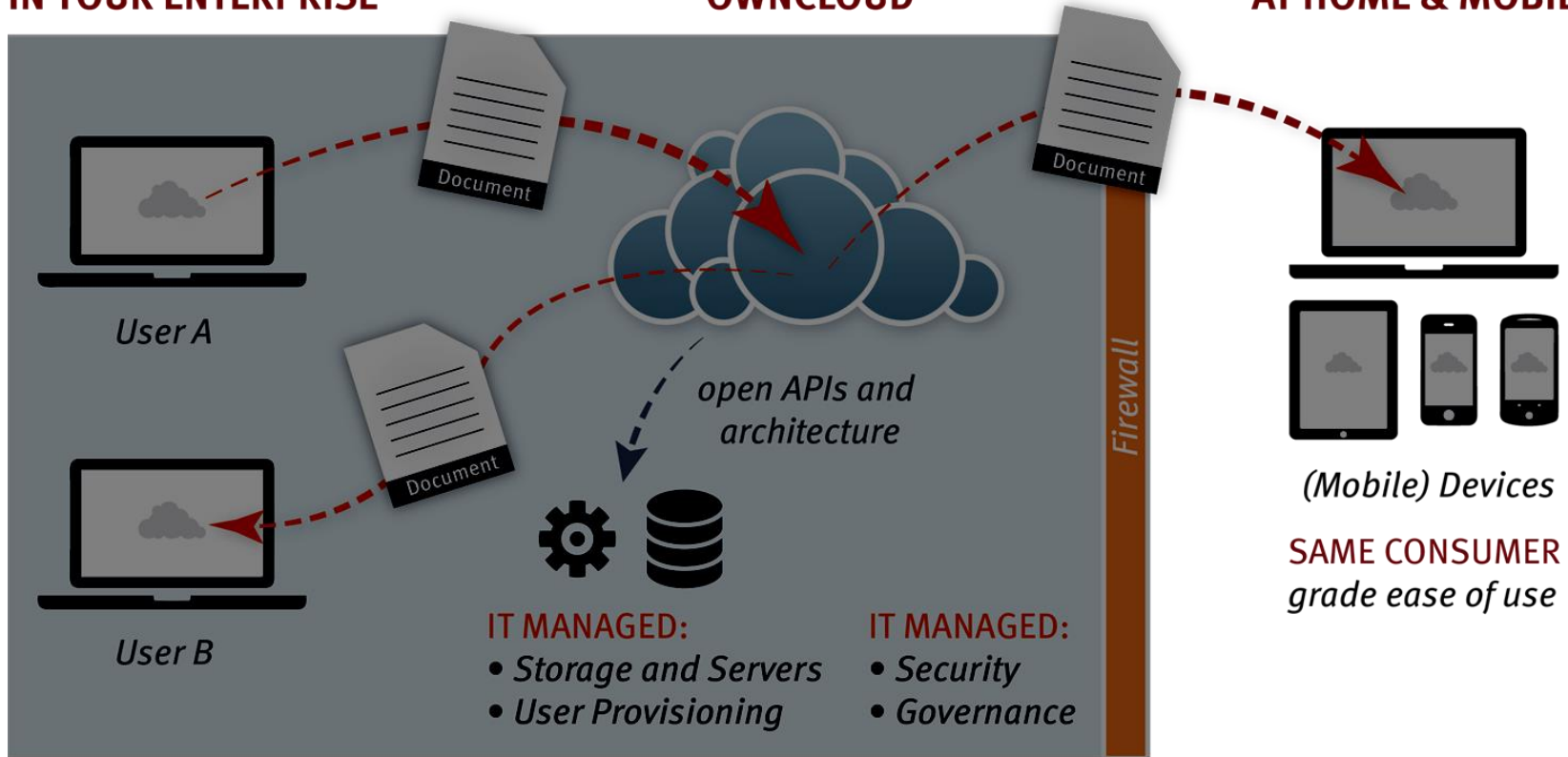


ownCloud – The Solution

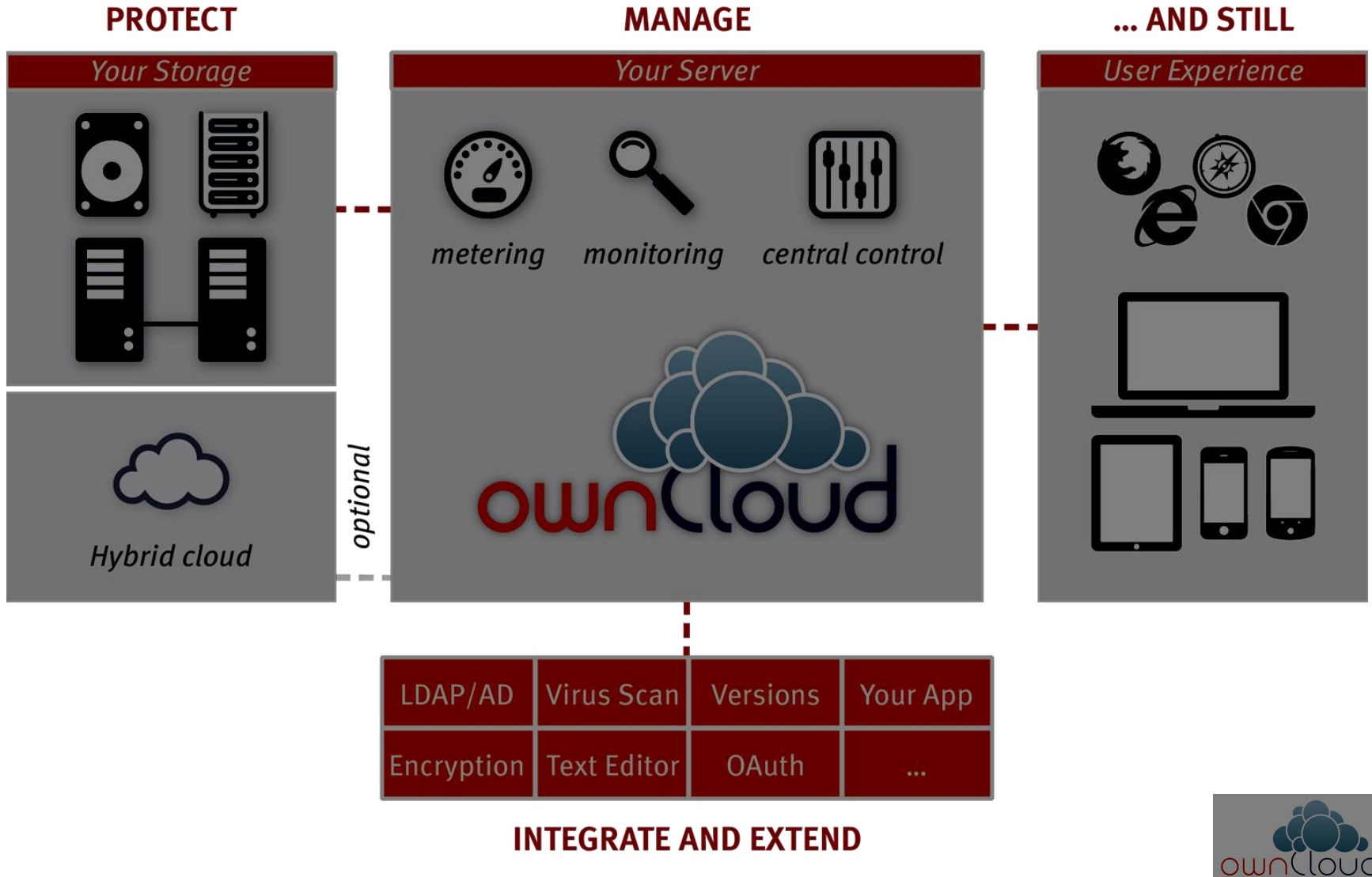
IN YOUR ENTERPRISE

OWNCLOUD

AT HOME & MOBILE



ownCloud Solution Overview



Typical File Sync & Share Architecture

Access

desktop
client

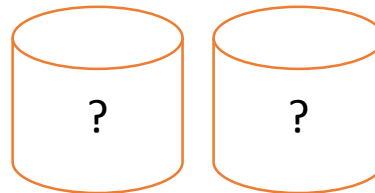
mobile
client

other
interfaces

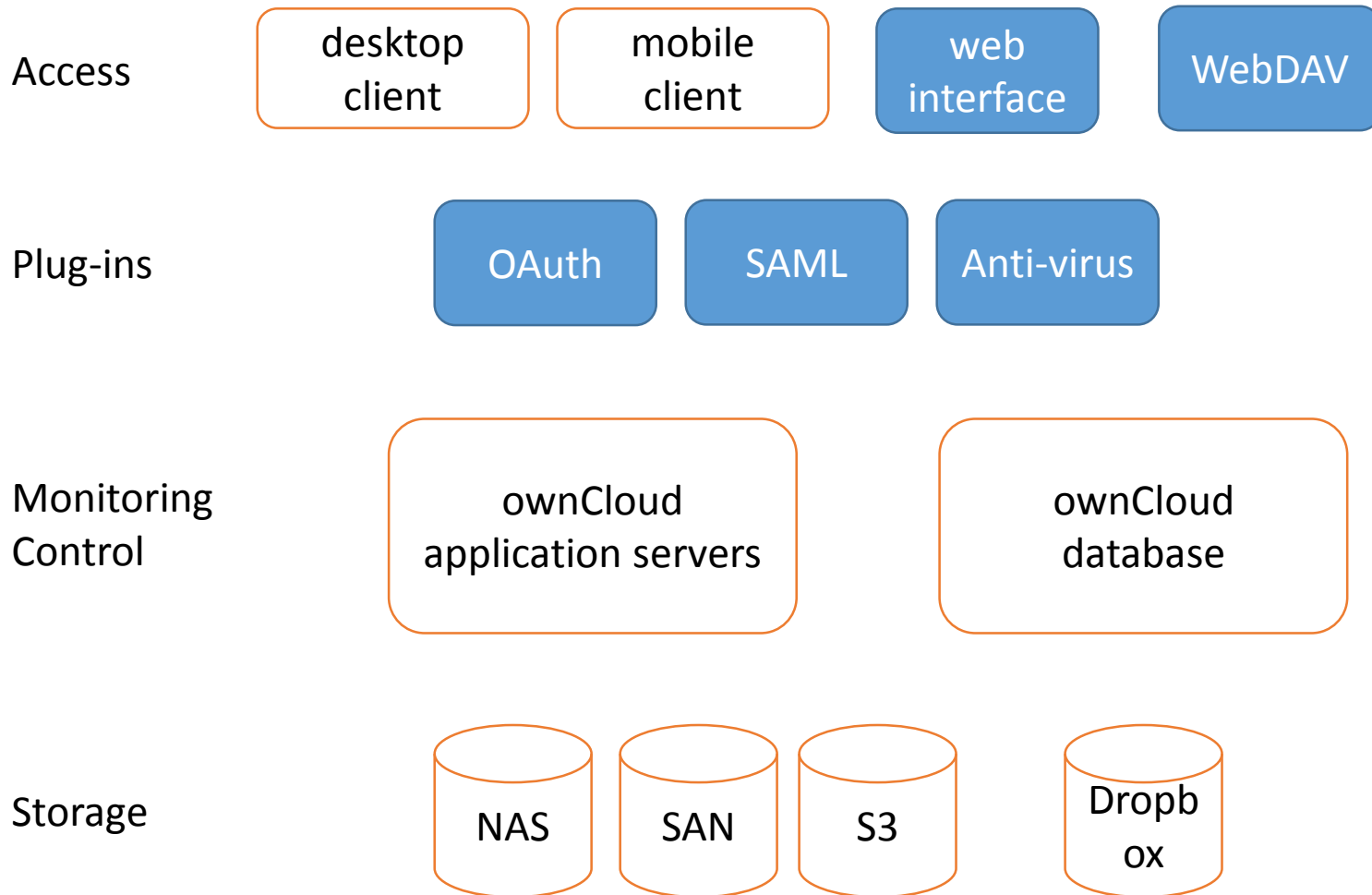
Monitoring
Control

xxBox

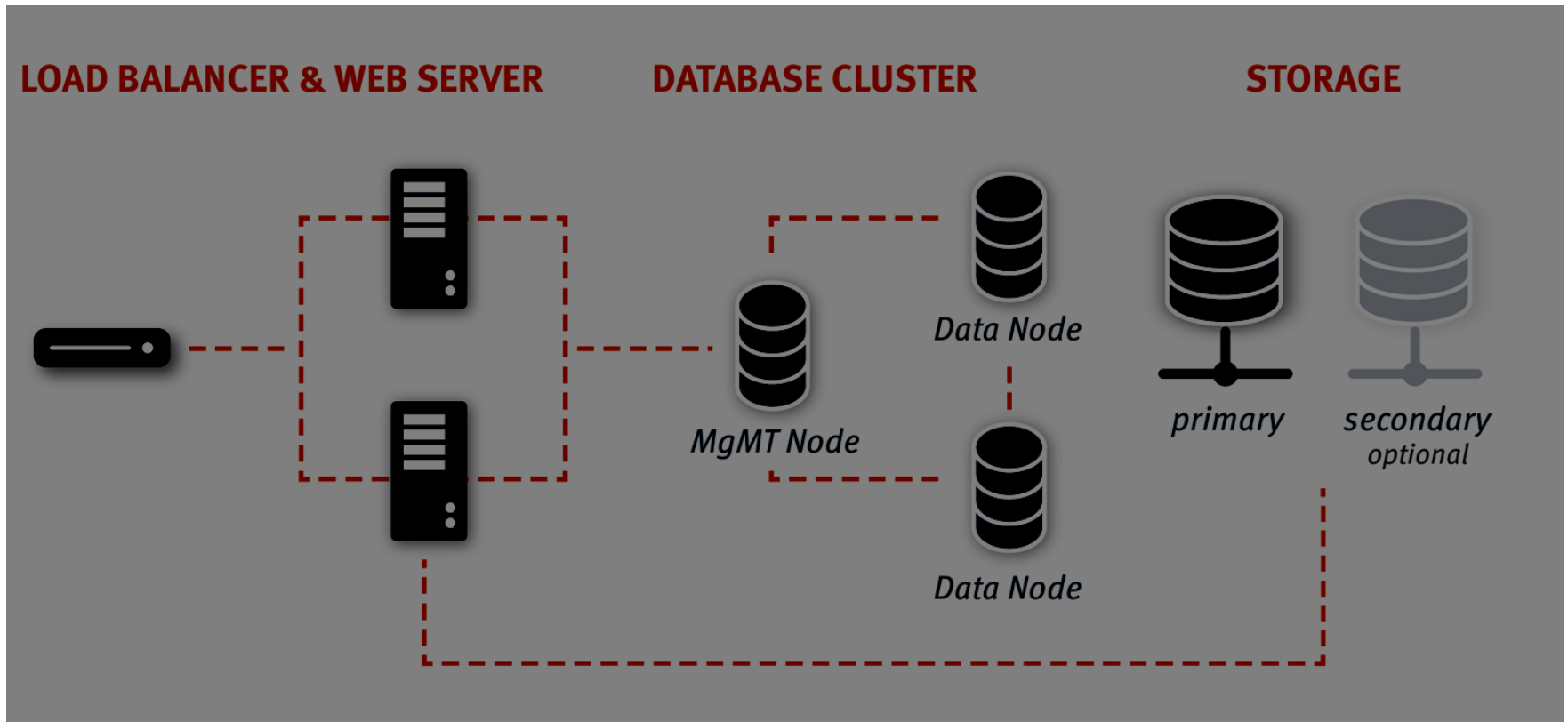
Storage



ownCloud Architecture



ownCloud Deployment Example



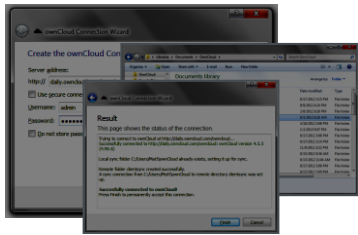
Performance
and scalability

Security
and governance

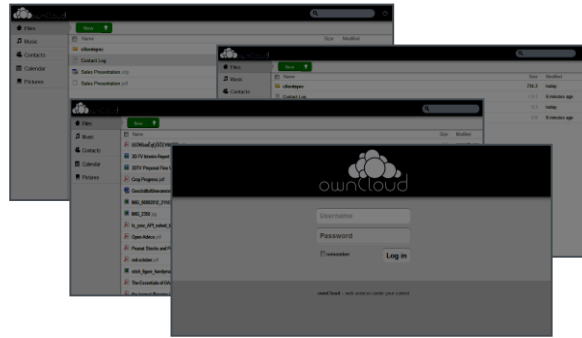
Economy
and control



OwnCloud Server and User Applications



Desktop Clients
Windows, Mac and Linux



ownCloud Server
Your Linux and Windows Servers



Mobile Clients
iOS and Android

Consumer-grade user experience

- Provisioning & management
- Directory integration
- Security & encryption
- IT infrastructure integration
- Monitoring, logging, auditing
- Scaling and high availability
- Ecosystem component integration

Consumer-grade user experience

The most flexible, secure FSS solution available



OwnCloud Integrates with Your IT Stack



Mobile	iOS, Android
Application	Social, doc management, collaboration, workflow
Web server	Apache, IIS
Security	SSL, TLS, AES-256 encryption
Authentication	LDAP, Active Directory, SAML
Database	MS SQL Server, Oracle, MySQL, PostgreSQL
Storage	Windows Home, Jive, S3, SWIFT, WebDav, CIFS
Sysops	Log managers, monitors
Platform	Linux, Windows

Community and Enterprise Editions

Community Edition

Open source project (AGPL)

Distributed in openSUSE,
Ubuntu, Debian, Fedora

Extremely active community

- ▶ 6.5M+ downloads
- ▶ 200+ contributors

100+ 3rd party plug-ins

Community support

www.owncloud.org

Enterprise Edition

Certified Community Edition

+

Enterprise Features & Tools

+

Enterprise Support SLAs

+

Commercial License

+

Engineering Access

www.owncloud.com

ownCloud Feature Comparison

License	Open Source: AGPL, GPL (must open source customizations)	ownCloud Commercial License
Certified by ownCloud		✓
Support	Community Forums	5x12 or 7x24 global live phone, email support
Unlimited Incidents		✓
Response Time	No SLA	Strong SLA
Onboarding & Migration Assistance		✓
Mobile Clients	Standard app for a fee	Unlimited Free Clients; May be Branded
Maintenance & Upgrades		✓
Feature Requests		✓
Enterprise Features		
File Firewall		✓
SAML/Shibboleth Authentication		✓
Home Directory Mounts		✓
Logging Module (Auditing & Sharing)		✓
Jive Integration		✓
Certified ownCloud Plug-ins		✓
MS SQL Server & Oracle DB Support		✓
Enterprise Documentation		✓
Provisioning API		✓

Feature example: File firewall

- A document access rules engine – if the rules are met, the file operation is allowed
- Allows to control access from the server side

Example use case:

- Multinational company, work for US govt and other customers; No US govt files can be synced to computers outside the US
- No sales files can be synced to mobile devices
- No files can be accessed outside 9 to 5 ET

Use case: Financial data management

Financial institute in the US

- Business case: data must be labelled depending on security level and access must be given accordingly.
- Company developed a layer to add security metadata (confidential/critical/etc)
- Company configured the file firewall so that confidential data can only be downloaded on premises

Use case: Single sign-on

Universities in the Netherlands

- Business case: students can use ownCloud installations on another campus.
- Universities used SAML authentication
- A student can now use his home university access credentials even on another campus

Who is ownCloud?

ownCloud.org

The Community-Projekt

- .Open Source project
- .Founded by Frank Karlitschek in Germany in January 2010
- .around 150 active contributors
- .2 million downloads
- .Very active developer community on github

ownCloud.com

Die Firma

- .Gegründet 2011
- .HQ in Boston, USA
- .OwnCloud GmbH in Nürnberg
- .Founders:
 - .Markus Rex, CEO
 - .Frank Karlitschek, CTO
 - .Holger Dyroff, VP Sales & Marketing
- .ownCloud Enterprise Edition, Modules, Consulting and Support



Stéphane Di Cesare, Pre-Sales Engineer

sdic@owncloud.com

+49 1579 2325224

Sylvie Serrano, Sales Representative

sylvie@owncloud.com

+49 1579 2325197

Thank you.

